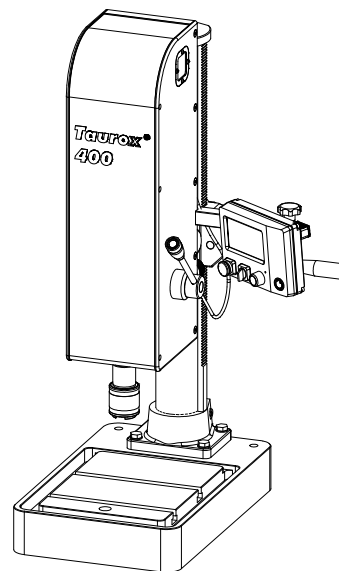


| | |
|--|---|
| Type of machine thread tapping machines | Taurox 400 |
| Thread capacity thread cutting (AlMg4.5Mn / 3.3547) | M5 – M18; blind hole 2.0 x D |
| Thread capacity thread cutting (X6CrNiMoTi17–12–2 / 1.4571 / V4A) | M5 – M16; blind hole 1.5 x D |
| Torque range adjustable | 2.00 – 40.00 Nm |
| Speed range adjustable | 50 – 600 rpm max. 500 rpm from 25 Nm |
| Modular construction (3-parts) | – spindle unit – operator and display unit – control unit |
| Operation | Menu driven |
| LCD Display | 4.3" TFT–display, 65536 colors |
| Spindle / tool holder | quick change holder Size 2 |
| Outreach | 201 mm |
| Travel height adjustment | 0 – 425 mm with hand crank |
| Column Ø / length / swivel range | 70 mm / 730 mm / 60° |
| Machine pedestal (WxDxH) | 469 x 296 x 75 mm T-slots DIN 650-12 |
| Dimensions machine (WxDxH) | 484 / 469 / 1200 mm |
| Dimensions control unit (BxTxH) | 400 / 210 / 400 mm |
| Weight with control unit | 94 kg |
| Electric supply / Power input | 230 V~ / 1,1 kW |
| Power input non-operated | < 40 W |
| Cable length between the modules | 3 m (others on request) |
| Spindle travel / thread depth | 90 / 80 mm |
| Depth accuracy | 0.1 mm |
| Entrance protection class | IP54 |
| Engineer standard | Conforms to CE / EMV |
| Digital inputs* | 3 (24 V) |
| Digital outputs* | 10 (24 V / 3.6 W) short-circuit proof |
| Finish | RAL 7035 / light grey RAL 5005 / signal blue |
| Quality evaluations / Error messages | Display with error message Evaluation and audible signal |



Software / Operation:

- **Languages:** German / English / Spanish (more on request)
- **Operation:** menu-guided via rotary knob and button
- **Display:** 4.3" color TFT–display with graphic quality evaluation
- **Depth unit:** mm / inch
- **Torque monitoring** with actual value display
- Independent of thread type and pitch
- **Process programs:** thread cutting, thread forming, Thread tapping to basic contact with depth tolerance, rethreading with lead monitoring, thread inserts, screw in, thread plug gauge
- **Chip clearance programs**
- **Grade of quality:** blowhole, array of torque, tolerance of depth, tool wear
- **Start program:** Start with start button, Start at workpiece zero point, Start at torque detection (automatic zero point identification with rotating spindle)
All start programs are compatible with feed for spindle feed*.
- **Rotation:** right and left rotation switchable
- **Reversal program:** variable speed 20% - 1000% (max. speed)
- **Parameter database:** 99 parameter data records
- **Counter:** Daily counter, Part counter, Quantity counter, OK / not OK adjustable with subsequent lock
- **Lubrication program:** Cooling lubricant and blow-out programs optimized for minimal quantity lubrication technology*
- **Switching function** for power outputs* for valves such as pneumatic part holder 24 V DC / 3.6 W
- **Digital inputs / outputs*** for automation with pre-assigned functions

*Options / Accessories

Technical data

Taurox®

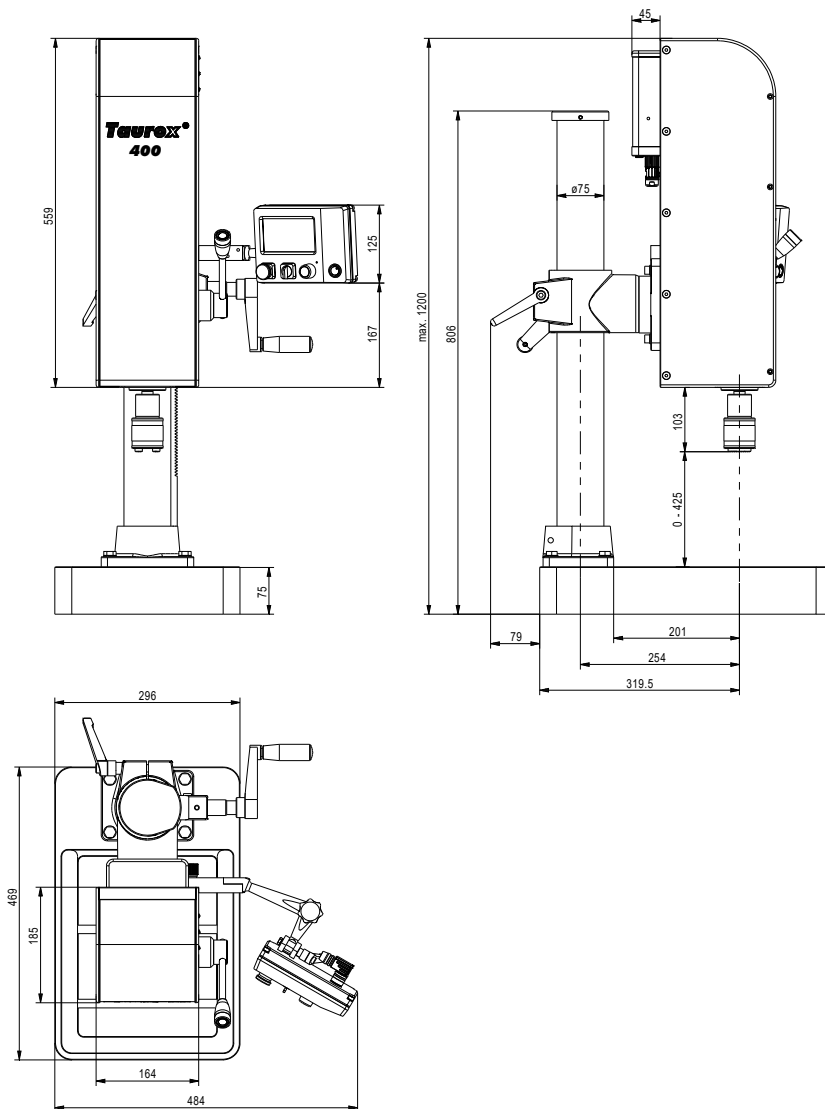


Fig.: View of the thread tapping machine **Taurox 400**

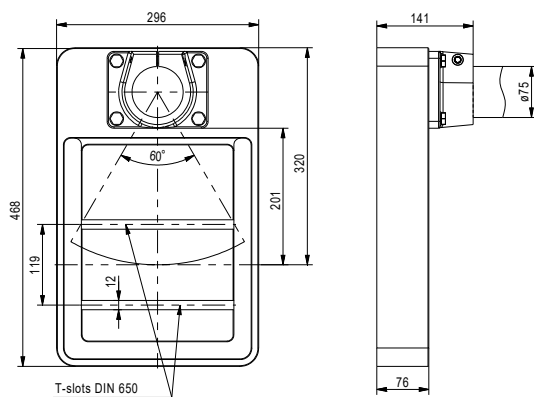


Fig.: View of the machine pedestal **Taurox 400**

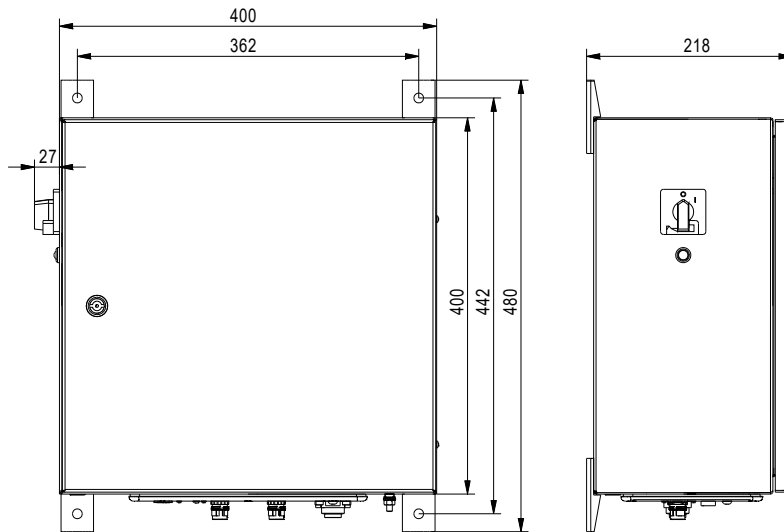


Fig.: View of the control unit **Taurox 300**

Options / Accessories:

- Quick change inserts size 1
- Quick change holder size 2
- Quick change inserts size 2
- Spindle feed system
- Height adjustment (column) with longer travel
- Minimum lubricant unit 2V with lubricant pulse and air pulse
- Minimum lubricant unit 3V with lubricant pulse, air pulse and air cleaning pulse
- Signalbar green, yellow and red for optical quality evaluation in the field of view of processing
- Signal light column green, yellow, red and horn for quality evaluation
- Additional push buttons selection for parameter data base
- Key switch with locking of the user interface
- External operating lock via input 24V DC
- Connection for external emergency stop and motor lock on control unit
- Automation connection via digital inputs and outputs
- Ethernet interface for control unit
- TauroView software for PC to visualize the required torque and optimize the processing parameters
- Customized machine software
- Custom Modbus for automation
- Customized cable lengths