

Technical data

Taurox®

| Type of machine | Tauro® Tribometer |
|--|---|
| Thread capacity (Thread cutting - blind hole 2,0 x D in AlMg4,5Mn / 3.3547) | M2 – M12 |
| Thread capacity (Thread cutting - blind hole 1,5 x D in stainless steel X6CrNiMoTi17-12-2 / 1.4571 / V4A) | M2 – M10 |
| Torque range (continuously adjustable) | 0,3 – 12Nm |
| RPM range (continuously adjustable) | 50 - 2400U/min |
| Spindle / tool holder | quick change holder Size 1 |
| Throat without Coordinate Table | 201mm |
| Travel height adjustment | 0 – 488mm with crank |
| Column Ø / length / swivel range | 70mm / 730mm / 60° |
| Machine pedestal (WxDxH) 2 x T-slots | 296 x 468 x 76mm T-slots DIN 650-12 |
| Dimensions machine (WxDxH) | 411 / 469 / 1085mm |
| Dimensions control unit (WxDxH) | 400 / 220 / 400mm |
| Electric supply / Power input | 230V~ / 1,1kW |
| Cable length between the module | 3m |
| Spindle travel / Thread depth max. | 90 / 80mm |
| Modular construction (3-parts) | - spindle unit - operator and display unit - control unit |
| Entrance protection class | IP54 |
| Engineer standard | Conforms to CE / EMV |
| LCD Display | 4.3" TFT–display, 65536 colors |
| Operation | Menu driven |
| Digital inputs / outputs (24V DC / 3.6W) (PLC capable for automation & valves) | 3 inputs 10 outputs |
| Depth accuracy | 0,1mm |
| Finish | RAL 7035 / light grey RAL 5005 / signal blue |
| Quality evaluations / Error messages | Display with error message Evaluation and audible signal |
| Feed system for spindle | Spindle feed pneumatic 6-bar |

Subject to change without notice

Coordinate Table for automated measurements

- Controlled by **Tauro® Link** analysis software
- Driven by AC servo motors with resolver and circulating ball screw
- Range X 300mm / Y 250mm (other ranges on demand)
- Limit switch and home switch
- Mounting plate with T slot



Cleaning station for cleaning of the test tool

- Controlled by **Tauro® Link** analysis software
- Tool cleaning of abrasion and chips
- Manual or automatic cleaning
- Easy emptying of cleaning station

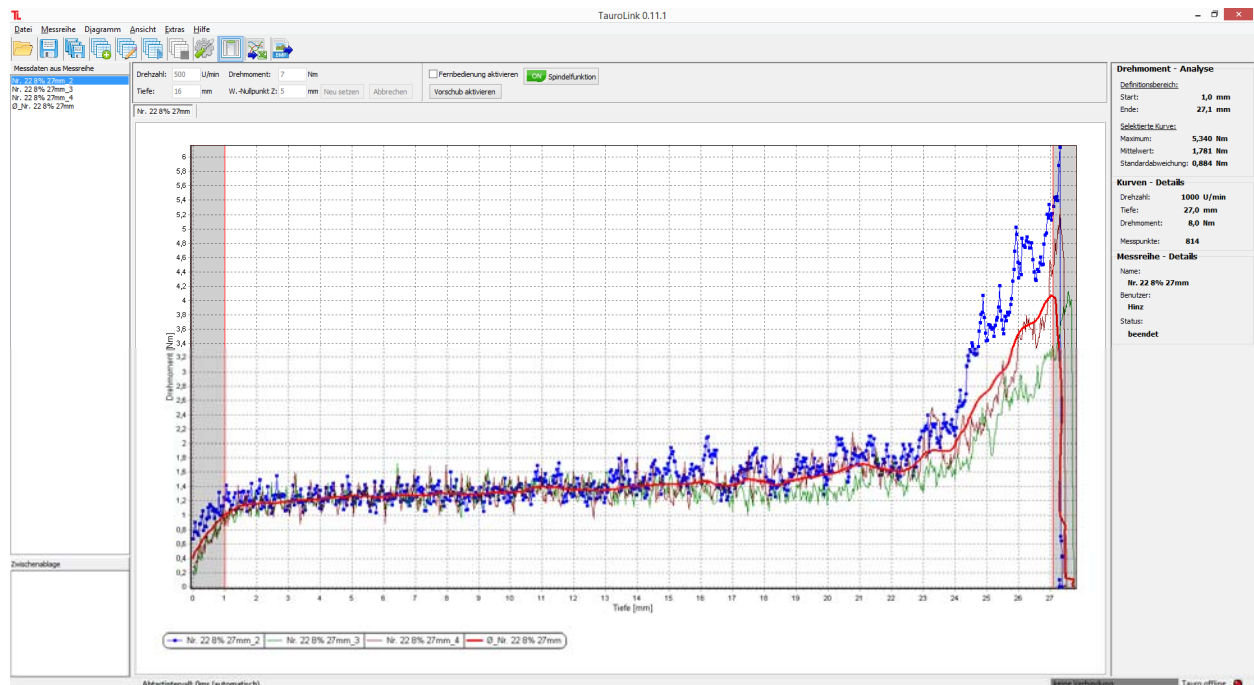


Tauro® Link Analysis and Control Software

- Acquisition of process parameters
- Download of the torque curve, manually / automatic
- Safe / open of the diagrams including comment field
- Export of measurements (file formats: xml, csv, bmp)
- Graphical representation of the measurements with adjustable filtering and smoothing
- Statistical analysis: Mean value, standard deviation, maximum values (Range adjustable)
- Print function
- Data connection by Ethernet
- Remote control of the thread tapping unit

Minimum system requirements:

- Windows® 7, Windows® 8.0/8.1 oder Windows® 10
- Intel Pentium® 3, or an equivalent x86 CPU, mit 1 GHz
- 1 GB RAM
- 100 MB free disk space



The chart displays a test series out of three measurements and the resulting mean curve (red). The info panel on the right shows details to the selected (blue) measurement curve with a domain of definition reaching from 1 to 29 mm of depth.

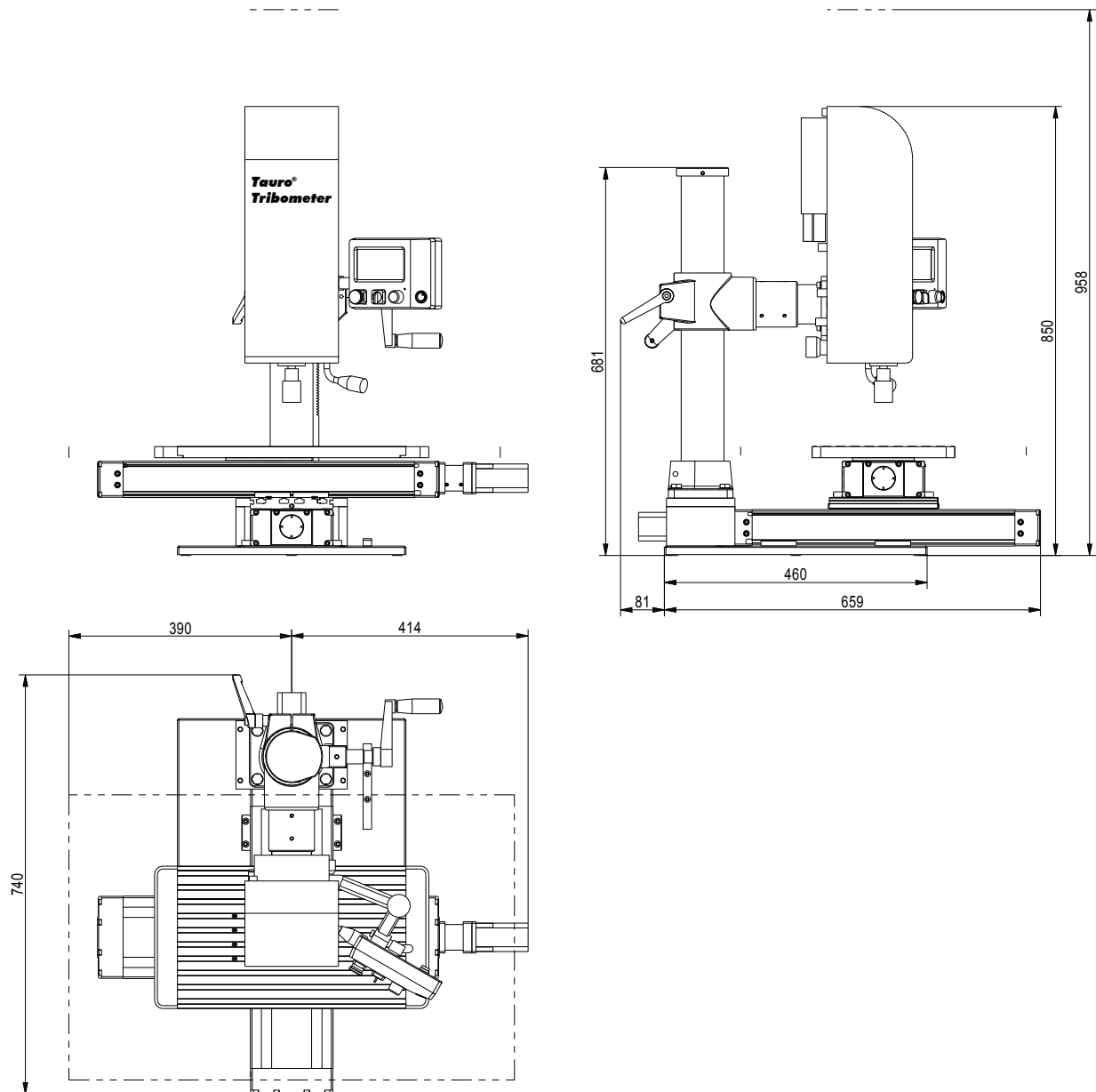


Fig.: View of the **Tauro® Tribometer** with Coordinate Table

Technical data

Taurox®

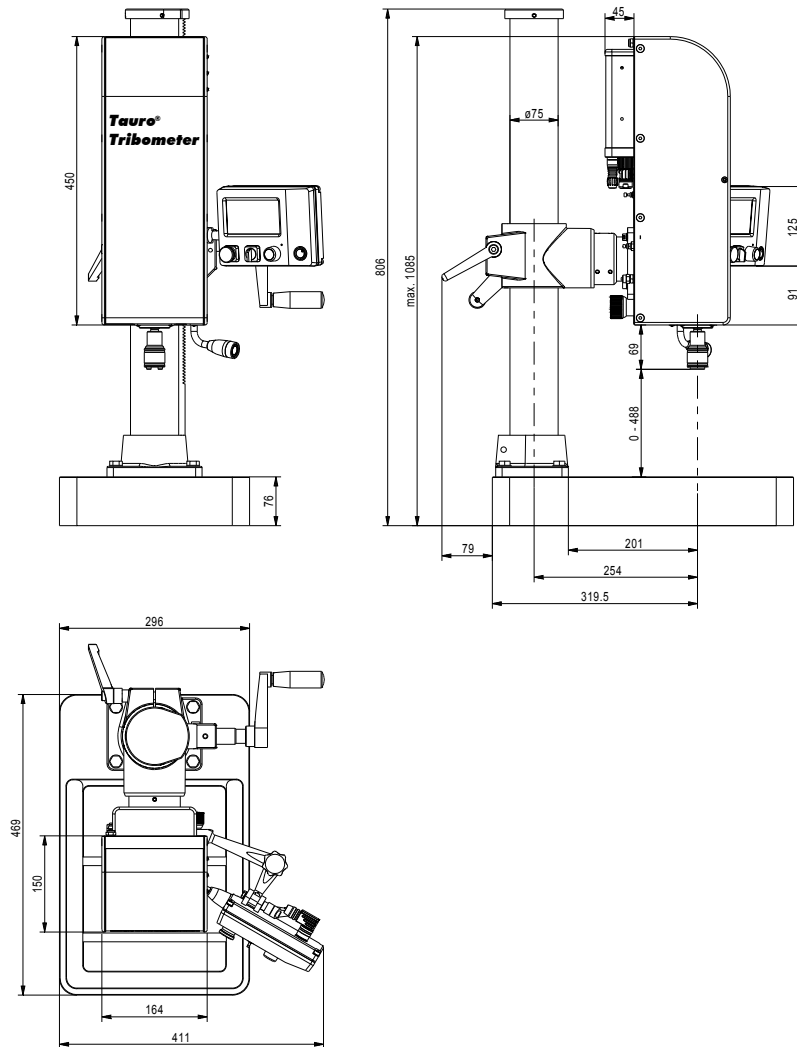


Fig.: View of the **Tauro® Tribometer** without Coordinate Table

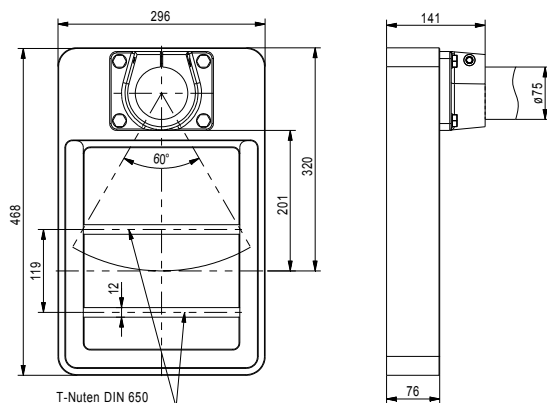


Abb.: View of the machine pedestal

Technical data

Taurox®

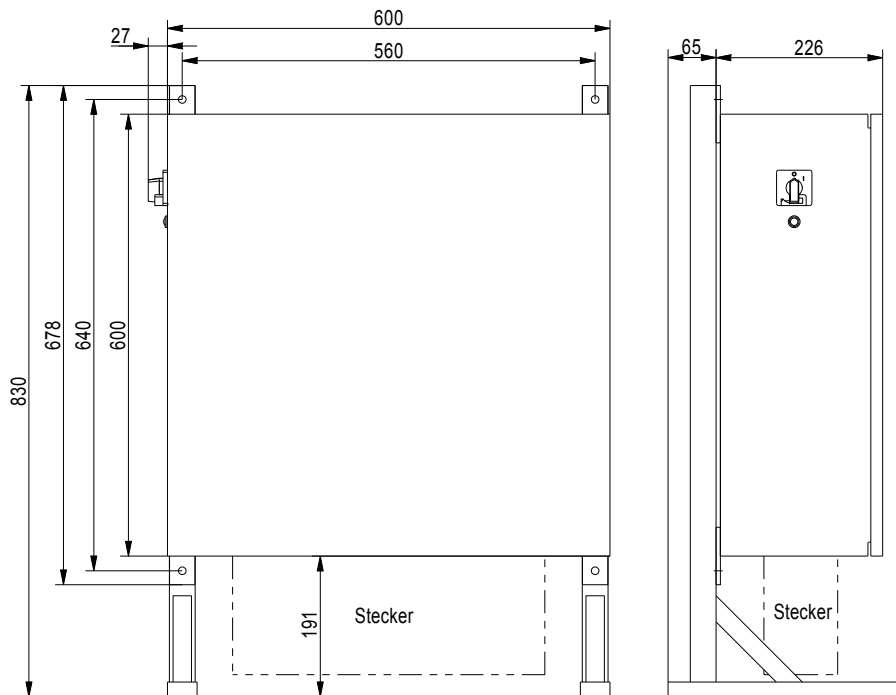


Fig.: View of the control unit **Tauro® Tribometer** with Coordinate Table

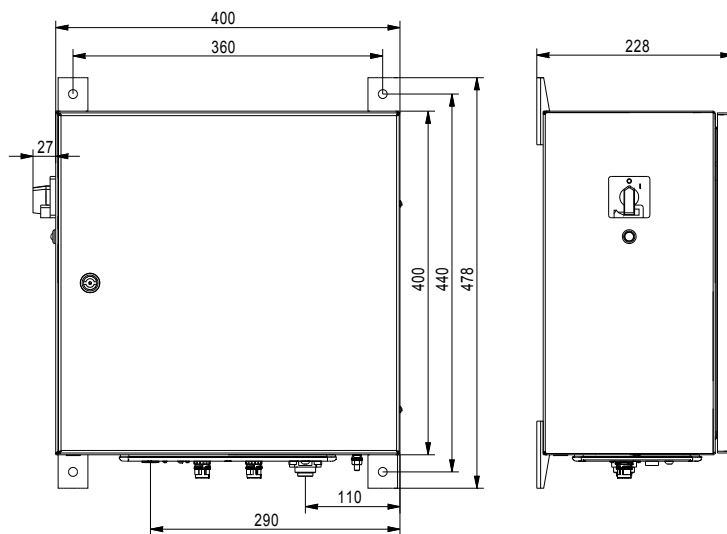


Fig.: View of the control unit **Tauro® Tribometer** without Coordinate Table